

There is a place

Activity Guide

MAY 2026



**Black Butte
Ranch**

— THERE IS A PLACE —



Black Butte
Ranch



SCAN FOR
MORE INFO

Rules & Regulations



DOGS:

- Keep dogs leashed in public.
- Clean up waste immediately.
- Disposal bags are provided at stations across the Ranch.



ACCESS REGISTRATION:

- BBR issued Access Pass must be displayed at all times.



FIRE SAFETY:

- Extinguish cigarettes properly.
- Only pellet and LPG (propane) BBQ's, grills, and smokers allowed.
- NO wood fires.
- Charcoal/Briquette BBQs are NOT allowed during fire season or at any home.
- Fireworks are prohibited (including sparklers).
- No seasonal open burning.



PROHIBITED DEVICES:

- Skateboards
- Longboards
- Hoverboards
- Roller skates
- Inline skates
- One and two wheeled electric balancing devices and electric scooter devices are not permitted.



TRAILS:

- Foot traffic only on nature trails.



LAKE & STREAMS:

- No swimming or wading in lakes or streams.
- No fishing allowed. (except for licensed, catch-and-release fly fishing on Phalarope Lake).
- No flotation devices permitted (except on Phalarope Lake).



BIKE PATH ALLOWED DEVICES:

- All bicycles
- Class 1 E-bikes (two-wheeled, pedal-assist only, low-speed electric bicycles, with no throttle, that have a maximum assisted speed of 20 mph)
- Non-electric scooters
- Tricycles
- Walkers
- Joggers
- ADA personal mobility devices are OK to use on bike paths, not the road (unless a bike path is unavailable)



PARKING:

- **NO STREET PARKING:** All vehicles must be parked off the road.
- **HOME PARKING:** Every home must provide at least two designated parking spaces.
- **LARGE VEHICLES & TRAILERS:** Class A and C motorhomes, boats, and trailers are prohibited in common parking lots. All RVs, boats, and inoperable vehicles must be stored within a fully enclosed garage or the official maintenance yard storage compound.
- **CAMPER VANS:** Class B vans are okay in designated spots only if they are your main ride and you aren't sleeping in them.
- **CONSTRUCTION GEAR:** Must be removed immediately once the job is completed.



WILDLIFE & PET SAFETY:

- Respect Wildlife: Keep your distance and leave them alone.
- Keep kids and pets close and in sight.
- Avoid letting pets out alone at night. Always check the yard first.
- Make noise (talk, clap, sing) to avoid surprising animals.
- Stay aware: Look for tracks, scat, and other signs of wildlife.
- Avoid letting pets out alone at night. Always check the yard first.
- Secure food: Keep decks, garbage, and BBQs clean. Bring pet food/water bowls inside.
- Report sightings to Police Dept: (541-595-2191)



OTHER RESTRICTIONS:

- No loud, disturbing or unnecessary noise.
- No Marijuana use in a public place or rental homes.



PHOTOGRAPHY:

- A permit is required in advance for all photo shoots (still photography, video, etc.).
- Drone photography is prohibited.
- Review the full policy and application:
BlackButteRanch.com/
the-ranch/photo-shoot-rfp

Following these rules helps ensure a safe and enjoyable experience for all at Black Butte Ranch

MAY 23-25, 2026
MEMORIAL DAY WEEKEND
AT THE RANCH

SATURDAY, MAY 23, 2026

8:30AM-6PM | BUY 2 FULL-PRICED ITEMS, GET THE 3RD 50% OFF
@ GLAZE MEADOW SPORT SHOP AND BISTRO

9AM-3PM | TENT SALE @ BIG MEADOW GOLF

10AM-3PM | DEMO DAYS @ BIG MEADOW GOLF

10AM-2PM | NATIVE PLANT SALE @ GENERAL STORE (ONE-DAY SALE)

8AM-8PM | BBR PRODUCE STAND @ GENERAL STORE

10AM-6PM | KIDS ACTIVITIES @ LAKESIDE ACTIVITY CENTER

SUNDAY, MAY 24, 2026

8:30AM-6PM | BUY 2 FULL-PRICED ITEMS, GET THE 3RD 50% OFF
@ GLAZE MEADOW SPORT SHOP AND BISTRO

9AM-3PM | TENT SALE @ BIG MEADOW GOLF

10AM-3PM | DEMO DAYS @ BIG MEADOW GOLF

8AM-8PM | BBR PRODUCE STAND @ GENERAL STORE

10AM-6PM | KIDS ACTIVITIES @ LAKESIDE ACTIVITY CENTER

MONDAY, MAY 25, 2026

8:30AM-6PM | BUY 2 FULL-PRICED ITEMS, GET THE 3RD 50% OFF
@ GLAZE MEADOW SPORT SHOP AND BISTRO

8AM-8PM | BBR PRODUCE STAND @ GENERAL STORE

10AM-3PM | KIDS ACTIVITIES @ LAKESIDE ACTIVITY CENTER



DINING



The Lodge was named one of the "50 Most Beautiful Restaurants in America"
People | Open Table



LODGE RESTAURANT

541-595-1260 | 12930 Hawks Beard

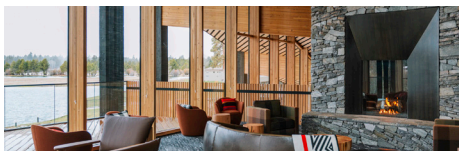
Dinner Reservations:
www.blackbutterranch.com/dine/#thelodge

Dinner (May 18 - 30) Sun - Thur	5pm - 8pm
------------------------------------	-----------

Dinner (May 18 - 30) Fri - Sat	4pm - 8pm
-----------------------------------	-----------

**BEGINNING MAY 18TH - THE LODGE
WILL BE OPEN 7 NIGHTS A WEEK
5:00PM TO 8:00PM SUN- THURS
4:00PM TO 8:00PM FRI- SAT**

**20% OFF + DINNER & BEVERAGE
SPECIALS MONDAY NIGHTS** Excludes
alcohol - Reservations Recommended. Ends 5-11



ASPEN LOUNGE

541-595-1260 | 12930 Hawks Beard

Dinner (May 18 - 31) Daily	4pm - 8pm
-------------------------------	-----------

**BEGINNING MAY 18TH - THE LODGE
WILL BE OPEN 7 NIGHTS A WEEK
5:00PM TO 8:00PM SUN- THURS
4:00PM TO 8:00PM FRI- SAT**



LAKESIDE BISTRO

541-595-1264 | 12934 Hawks Beard

May 22-25 Coffee + Pastries.. All Day Menu.....	7:30am - 11:00am 11am - 8pm
---	--------------------------------

May 18 - 21, 23 - 31 Coffee + Pastries.. All Day Menu.....	7:30am - 11:00am 11am - 4pm
--	--------------------------------



ROBERT'S PUB

541-595-1240 | 13020 Hawks Beard

Dinner Reservations:
<https://www.exploretock.com/roberts-pub-sisters/search>

Starting May 18 - 31 All Day Menu	4pm - 8pm Alternating Specials
---	-----------------------------------

May 20 Trivia Night!	5pm Doors Open 6pm Trivia Begins
--------------------------------	-------------------------------------

SNACK SHOPS + CONVENIENCE



GENERAL STORE

541-595-1222 | 13890 Bishops Cap

May 18 - 25	8am - 8pm
May 26 - 31	
Daily	8am - 6pm



BIG MEADOW GOLF SNACK SHOP

Big Meadow Golf Shop | Robert's Pub
541-595-5920 | 13020 Hawks Beard

Daily.....	7:30am - 5pm
------------	--------------

*Weather permitting



GMRC SNACK SHOP

541-595-5880 | GMRC

May 22 - 25	8am - 5pm
May 25 - May 31	CLOSED
June 12	OPEN 10am - 5pm



GLAZE MEADOW GOLF SNACK SHOP

Glaze Meadow Golf Shop
541-595-5953 | 13525 Ponderosa

Daily	7:30am - 5pm
-------	--------------



FRESH PRODUCE

13890 Bishops Cap | General Store

Opens May 22

May 22 - 25	8am - 8pm
May 26 - 31	
Daily	8am - 6pm

GOLF



BIG MEADOW GOLF

541-595-1545 | 13020 Hawks Beard

*Courses open, weather permitting

GOLF SHOP	7am - Dusk
DRIVING RANGE	7:30am - Dusk*
GOLF COURSE	8am - Dusk*

*Weather permitting

Spring B.A.R. | May 2-4, 2025
bbr-or.com/spring-bar

LITTLE MEADOW PUTTING COURSE

541-595-1545 | 13020 Hawks Beard

PUTTING COURSE	10am - Dusk*
-----------------------	--------------

*Weather permitting

GLAZE MEADOW GOLF

541-595-1270 | 13525 Ponderosa

GOLF SHOP	7am - Dusk
DRIVING RANGE	7:30am - Dusk*
GOLF COURSE	8am - Dusk*

*Weather permitting

MEMORIAL DAY DEMO DAYS:

May 23rd & 24th Demo Days at the Big Meadow Driving Range from 10:00am to 3:00pm (Cobra, Taylormade etc.)

MEMORIAL DAY TENT SALE:

May 23rd & 24th at the Big Meadow Golf Shop from 9:00am to 3:00pm Both Golf shops will be 20% off. The Big Meadow Tent sale can go up to 50% off

Looking forward to another exciting year!!



BLACK BUTTE STABLES

541-595-2061 | 13892 Bishops Cap
BlackButteStables.com

STARGAZING

in the Big Meadow

PRIVATE TOURS



MORE INFO & RESERVATIONS:
starshine-theater.com/black-butte-ranch-stargazing

GUIDED HIKE - PRIVATE TOURS ALONG THE MEADOW



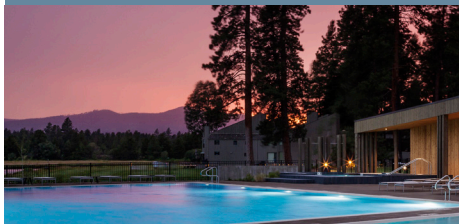
MORE INFO & RESERVATIONS:
starshine-theater.com/black-butte-ranch-guided-hike

MCKENZIE RIVER RAFTING WILD & SCENIC



Since 1999, High Country Expeditions has offered safe, high-quality McKenzie River rafting.

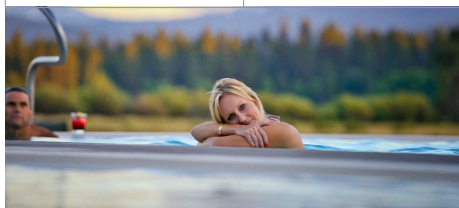
LAKESIDE



LAKESIDE POOL

541-595-1275 | 12938 Hawks Beard

Opens May 22	
Daily	8am - 8pm
Adult Lap Swim	8am - 10am
Open Swim	10am - 8pm



LAKESIDE HOT TUB, SAUNA & EXERCISE ROOM

541-595-1275 | 12938 Hawks Beard

Daily	8am - 8pm
-------	-----------

- Kids welcome after 10am.
- Kids must be ages 15+ to use fitness equipment
- Kids must be ages 7+ to use the hot tub
- Wipe down equipment after use
- Gain entry to facility with gate card or pin number.



LAKESIDE ACTIVITY CENTER

541-595-1282 | 12938 Hawks Beard

Surveillance cameras in use

Activity Center	
May 1-22.....	CLOSED
May 23-24.....	10am - 6pm
May 25.....	10am - 3pm
May 26-31.....	CLOSED
Game Room	
Daily	9am - 8pm

MEMORIAL DAY KIDS ACTIVITIES

Kids under the age of 10 may not be left without an adult supervisor.

Ceramics: ages 4+; pre-registration required; pieces are available to be picked up the following day at 11am.

SAT, 5/23

10AM-6PM

10am - 5pm

WHEEL FUN BIKES AVAILABLE

10:15am - 11am

A/C HANDPRINT FLOWERS | \$6

11am - 11:30am

STUFFED ANIMALS SESSION 1 | \$20

11:30am - 12pm

STUFFED ANIMALS SESSION 2 | \$20

12:30pm - 1:15pm

CERAMICS SESSION 1 | \$17 (pre-reg req.)

1:30pm - 2:15pm

CERAMICS SESSION 2 | \$17 (pre-reg req.)

2:30pm - 3:15pm

ICE CREAM DECORATING | \$6

3:30pm - 4:30pm

TIE-DYE T-SHIRTS SESSION 1 | \$15 w/ shirt; \$10 w/o

4:45pm - 5:45pm

TIE-DYE T-SHIRTS SESSION 1 | \$15 w/ shirt; \$10 w/o

SUN, 5/24

10AM-6PM

10am - 5pm

WHEEL FUN BIKES AVAILABLE

10:15am - 11am

A/C RAINBOW WANDS | \$6

11am - 11:30am

STUFFED ANIMALS SESSION 1 | \$20

11:30am - 12pm

STUFFED ANIMALS SESSION 2 | \$20

12:30pm - 1:15pm

CERAMICS SESSION 1 | \$17 (pre-reg req.)

1:30pm - 2:15pm

CERAMICS SESSION 2 | \$17 (pre-reg req.)

2:30pm - 3:15pm

ICE CREAM DECORATING | \$6

3:30pm - 4:30pm

TIE-DYE T-SHIRTS SESSION 1 | \$15 w/ shirt; \$10 w/o

4:45pm - 5:45pm

TIE-DYE T-SHIRTS SESSION 1 | \$15 w/ shirt; \$10 w/o

MON, 5/25

10AM-3PM

10am - 2pm

WHEEL FUN BIKES AVAILABLE

10:15am - 11am

A/C PINE CONE CRITTERS | \$6

11:15am - 12pm

A/C WIND CATCHER | \$6

12:15pm - 1pm

ICE CREAM DECORATING | \$6

GLAZE MEADOW REC CENTER



GMRC FACILITY OPEN DAILY | 7AM - 8PM | SURVEILLANCE CAMERAS IN USE



GMRC INDOOR POOL

13695 Hawks Beard | 541-595-5881

*Kids welcome after 10am | Cameras in use

Adult Lap Swim	
4 lanes	7am - 9am
2 lanes	9am - 10am
Adult Swim	9am - 10am
2-3 lanes	
Open Swim	10am - 8pm

GMRC OUTDOOR POOL

Opens May 22, 2026

Adult Swim	7am - 10am
Open Swim	10am - 8pm



BARRE ABOVE CLASSES

Register & pre-pay: LifeLoveYoga.com

SATURDAY BARRE | 10:15am - 11:15am
GMRC Yoga Room



GMRC HOT TUB, STEAM ROOM & FITNESS ROOM

13695 Hawks Beard | 541-595-5881

Adults Only	7am - 10am
Families* Ages 7+	10am - 8pm

- * Kids 6 & younger not allowed in hot tub or steam room
- * Kids 7-14 must be supervised by an adult
- * Wipe down equipment after use
- * Kids must be ages 15+ to use fitness equipment

GMRC EQUIPMENT RENTAL SHOP

13695 Hawks Beard | 541-595-5877

Mon-Tues	Inquire at GMRC Rec Desk
Weds-Sun	9am - 5pm
5/25 Memorial Day	Open 9am - 5pm

OUTDOOR YOGA CLASSES

Dreaming of warm summer days outside!!

Wednesday mornings from 8:30-9:30 am

July 1 - September 9, 2026
weather and smoke dependent

pre-register online at
WWW.LIFELOVEYOGA.COM
and drop ins are also welcome



SPA & RETAIL



Massages | Facials | Manicures | Pedicures

SPA

Glaze Meadow Recreation Center
13695 Hawks Beard | 541-595-5878

Daily (May 1 - 22)	9:30am - 5pm
May 23 - 24	8:30am - 6pm
May 25 - 31	9:30am - 5pm

Call at least a day in advance to book your appt. See full offerings at BlackButteRanch.com/Spa. All spa appts are subject to availability. Specials may not be combined with other offers.

MAY SPA SPECIALS



— Ranch Together —



Enjoy 20% off all services.

SHARE THE SPA EXPERIENCE.

When a returning guest brings a first-time guest, both enjoy **20% off** all services.

Valid for May only. Not combinable with other offers.

TREAT YOURSELF—OR SOMEONE SPECIAL—TO A FULL DAY OF RELAXATION AT THE SPA.

This limited-time package includes our most-loved services.

Special Price: **\$315 (20% Off)**

Be Our Rodeo Queen for the Day



Special Price: \$315 (20% Off)
Eontestjfol.

MAY SPA SPECIALS



Queen For the Day
At The Black Butte Ranch Spa

MOTHER'S DAY SPA SPECIAL

Celebrate the women who do it all with a day of well-deserved relaxation this Mother's Day.

Treat yourself—or someone special—to a full day of indulgence at the spa.

Special Rodeo Queen Package Price: **\$315 (20% Off)**

Regular Value: \$394

Enjoy:

- 60-Minute Aromatherapy Massage
- 60-Minute Illumination Facial
- FarmHouse Fresh Lotion to take home

Because everyone deserves a day dedicated entirely to them.

Available May 1 – 31

Call 541-595-5878 at least a day in advance to book your appointment or book online.

See full offerings at BlackButteRanch.com/Spa



PICKLEBALL

PICKLEBALL COURTS

COURT RESERVATIONS | 541-595-1285

PICKLEBALL RESERVATION COURTS

Pickleball Courts may be reserved for a maximum of two hours of play per household per day. May be reserved 1 day in advance. Call to book at 541-595-1285 or in-person at Glaze Meadow Rec. Center Desk.

BM Courts #1 - 2 (or Pickleball Courts A, B, C, D) Big Meadow	Daily
--	-------

GMRC Courts #1-4 GMRC Family Rec Area	Daily
---	-------

GMRC Courts #5-12 GMRC Area	Daily
---------------------------------------	-------

NON-RESERVATION COURTS

Tennis Courts #12 - 13 Upper Glaze Meadow	Lined for Pickleball, with portable nets
---	--

DROP-IN PLAY PICKLEBALL

Drop-in Pickleball begins June 4

COURT RESERVATIONS | 541-595-1285

Drop-In Play: Players drop in, without reservations and play other Drop-In players. Individuals or groups of less than 4 to come and play with others. It provides a structure of rotating players into games and better utilizes the courts. If you have four players to play together for an hour or two, please reserve a court.

Drop-in Play	GMRC #5 - 12 #9-11 when available
--------------	--------------------------------------

All Players Drop-In Play	Mon - Sat 8am - 10am *Weather permitting
--------------------------	--

DROP-IN PLAY GUIDELINES

Courts # 5 and # 6 will be for Recreational Players (3.0±) with less competitive emphasis.

Courts #8 will be for Beginners

Courts #7, #9 & #10 Intermediate (3.5 >)

Courts #11 & #12 Advanced Play (4.0 >)

Players self-select their skill level. See "Pickleball Skills Levels" (on sandwich board) for a simple way to figure out your skill level.

PICKLEBALL EQUIPMENT

Check the GMRC Rec Desk for court reservations, pickleball equipment rentals and lessons.



PICKLEBALL PROGRAMS

Register: 541-595-1285

All lessons must be pre-registered and pre-paid prior to class time. Proof of payment will be required to participate.

Jed Kizziar and Head pickleball Pro, Mitch Foster offer private and group lessons.

Programming begins June 4

1 HR CLINICS AVAILABLE TO BOOK

Private Lesson	\$125/hour
Semi-Private Lesson	\$155/hour
Private Lesson	\$125/hour
Team Up - The Pro Challenge:	\$150/hour
Play With Pro:	\$150/hour (3 people, \$50/per person)
Coached Play:	\$200/hour (4 people, \$50/per person)

PRIVATE LESSONS

Two Players	\$300 per person
Three - Four Players	\$240 per person
Power Hour Tennis	Thursday & Saturday 9:00-10:00 AM \$35 per class

OTHER LESSONS

PASS Academy Drill (Adults)	Mon & Weds 6:30pm - 8:00pm \$50 per person
PASS Academy Drill (Adults)	Mon & Weds 6:30pm - 8:00pm \$50 per person
Pickleball 101 (Adults)	Mon & Sat 8am - 9am \$40 per person
Family Pickleball (All Ages)	Tues & Thur 8am - 9am \$40 per person
Coached Play (Adults)	Wed & Fri 8am - 9am \$40 per person

TENNIS



TENNIS PROGRAMS

Register: 541-595-1285

All lessons must be pre-registered and pre-paid prior to class time.

Proof of payment will be required to participate. **Programming begins May 16**

Tennis enthusiasts may utilize 14 outdoor tennis courts throughout the Ranch, including three lighted courts. Our Black Butte Ranch on-site Head Tennis Instructor, Jed Kizziar will offer private and group lessons. Meet others in tennis and pickleball skill levels in our stunning natural environment. Court reservations are required on most courts from Memorial Day through Labor Day. Call **541-595-1285** or stop by the GMRC Rec Counter to reserve your court, rent a racket or schedule a lesson.

COURT RESERVATIONS | 541-595-1285

Reservations are available the day prior to play and the day of play. Call 541-595-1285 or stop by the GMRC Rec Desk. Limited 2 hours of play per day per household, except in the case of lighted courts which are limited to one hour of play during the evening period after 7pm. Reserved courts that are not in use 10 minutes after the hour become available for drop-in play until the next reservation.

TENNIS RESERVATION COURTS

RESERVATION COURTS

Big Meadow #1 - 2
(Tennis & Pickleball lines)
South Meadow #3 - 4
Glaze Meadow #5 - 9

Limit 2 hrs of play/home site/day | Incl. lighted courts

LIGHTED RESERVATION COURTS

Glaze Meadow Courts #7 - 9
Courts are lit until 11pm |
Limit 1 hour of play / home site / day

TEACHING COURTS

Limited availability

Glaze Meadow #10 - 11

NON-RESERVATION COURTS

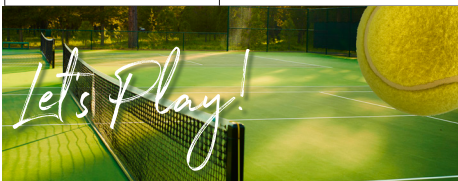
Limit play time to 1 hour when others are waiting

UGM COURT Tennis & Pickleball lines

Upper Glaze #12 - 13

PAULINA No parking available

Paulina Court #14



JUNIOR TENNIS PROGRAMS

Mini Aces (Ages 4-5)	Wednesday & Friday 9:00-9:30 AM \$25 per class
Rising Ralliers (Ages 6-8)	Wednesday & Friday 9:00-10:15 AM \$30 per class
Future Champions (Ages 9-12)	Wednesday & Friday 10:15-11:30 AM \$35 per class
Game On Academy (Ages 13-18)	Thursday 11:00-12:30 PM \$40 per class

ADULT TENNIS CLINICS (AGE 18+)

Power Hour Tennis	Thursday & Saturday 9:00-10:00 AM \$35 per class
Championship Liveball	Saturday 10:00-11:30 AM \$35 per class
Sunset Social Tennis (Ages 21+)	Wednesday 5:00-6:30 PM \$40 per class Beer ticket included
Power Hour Tennis	Thursday & Saturday 9:00-10:00 AM \$35 per class

PRIVATE AND SMALL GROUP TRAINING

One-on-One	\$80
Two Players	\$90
Three Players	\$100
Four Players	\$110
5+ Players	\$25 per person

GLAZE MEADOW SPORTS SHOP

Glaze Meadow Recreation Center
13695 Hawks Beard | 541-595-1270

Daily 9:30am - 5pm

May 23 - 24 8:30am - 6pm



RANCH AWAKENS MEMORIAL DAY SALE 5/22 - 5/25

GLAZE MEADOW SPORTS SHOP SPECIAL OFFER

Buy two full-priced items,
get the third 50% off.

Offered From May 22-25
Discount applied to the
lowest-priced item

Take 30% off all Black
Butte Ranch-branded
glassware and mugs at the
Glaze Meadow Sports
Shop and Lakeside Bistro,
May 22-25



SHOP OUR ONLINE STORE

Black Butte Ranch style, shipped
straight to your door, anywhere in the
USA!



WILDLIFE SIGHTINGS



We share the Ranch with
all kinds of wildlife - **please be
aware that there have been recent
wildlife sightings.** Remember to stay
calm, make your presence known,
and do not run. Please do not leave
pets outdoors.

REPORT SIGHTINGS ASAP to our
Police Dept (541) 595-2191



NEW UNATTENDED PET POLICY

To ensure a comfortable experience for all:

1. Pets must be kept under control
and not cause disturbances (e.g.,
excessive barking).
2. Pets may only be left unattended
for 15 minutes or less.
3. Pets should not interfere with others'
enjoyment of the Ranch.

*Thank you for
your cooperation!*



WELCOME CENTER

541-595-1252 | 13899 Bishops Cap

Lobby Sun - Wed	7am - 10pm
--------------------	------------

Lobby Thurs - Sat	7am - 11pm
----------------------	------------

Reservations	9am - 6pm
--------------	-----------

Drive-Thru window no longer open

Gift Cards | Lodging Packages

OWNER SERVICES

541-595-1527 | 71225 McAllister Rd (Sect 5)

Office (M-F)	6:30am - 5pm
--------------	--------------

Pit & Refuse (Daily)	6:30am - 5pm
----------------------	--------------

Note: No dumping of debris after 3:30pm.
The pit gate will be locked at 4pm.

POSTAL CENTER

13895 Bishops Cap | 541-595-1250 ext. 2

Mon - Fri (May 1-22)	9am - 4pm
----------------------	-----------

May 25 Memorial Day	CLOSED
------------------------	--------

Saturdays May 23 - Sept 5	9am - 12pm
------------------------------	------------

12pm cut-off for all outgoing mail



FAMILY RECREATION AREA

Equipment Rentals: 541-595-5881

Equipment Rentals	Glaze Meadow Rental Shop OR GMRC Rec Desk
----------------------	---



SPORTS FIELD

At the Big Meadow "Y" on Hawks Beard
Soccer, Basketball, Volleyball, Playground & Picnic Pavilion

Equip Rentals	LAC
---------------	-----



BE PREPARED FOR EMERGENCIES

BE READY. GET SET. GO!

Know evacuation levels and follow advice of emergency officials

Level 1: BE READY

BE AWARE – DANGER IN THE AREA PREPARE TO EVACUATE

- Monitor emergency services websites and local news media
- Opt-in with Deschutes County to receive local Emergency Alerts
- Have your Emergency Plan and Go-Kit ready

Level 2: GET SET

SIGNIFICANT DANGER IN THE AREA – PREPARE TO LEAVE

- Conditions can change rapidly - this may be the only notice you receive
- Time to act - follow your Emergency Plan
- Relocate to a safe place and let loved ones know you are safe

Level 3: GO!

DANGER IS IMMINENT

- Leave without delay, it is unsafe to stay
- Do not gather belongings or stay to protect the home
- Emergency services may not be able to assist you

In the event of evacuation, signs will be placed on evacuation routes



APPLY NOW

Join us in Recreation.

Lead Activities,
Staff an Info Desk,
Rent Equipment,
or Lifeguard!

NOW HIRING FOR SUMMER
We need lifeguards!

IN A LANDSCAPE



“IN A LANDSCAPE” CONCERT 2026

June 15 | 6pm – 7:30pm - June 16 | 6pm – 7:30pm - June 17 | 6pm – 7:30pm

DON'T MISS OUT! Black Butte Ranch is offering a variety of lodging specials along with food and beverage services, including a la carte Charcuterie Boxes, a Ranch BBQ Buffet or a VIP dining experience on the Aspen Lounge deck with seated viewing of the concert.

Lodge Restaurant reservations recommended

SMALL CHOICE, BIG IMPACT

Native Plant Sale

May 23, 2026 10AM - 2PM

BLACK BUTTE RANCH GENERAL STORE

13890 Bishops Cap, Sisters, OR 97759

PLANTS
FOR SALE

FORBS/PERENNIALS

- Yarrow
- Penstemon
- Oregon Sunshine
- Wild Blue Flax
- Large-Leaved Lupine

GRASSES

- Idaho Fescue
- Prairie Junegrass

TREES

- Vine Maple

SHRUBS

- Twinberry Honeysuckle
- Oregon Grape
- Dogwood
- Golden Currant

PAYMENTS
ACCEPTED

Cash, Check,
Credit Card,
or Venmo



SPONSORED BY



BLACK BUTTE
CONSERVANCY

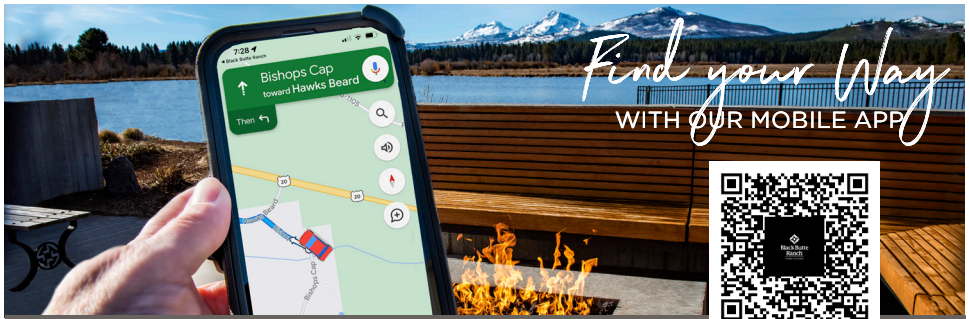
Pre-Order
QR Code
Active May 1-15



BBR RFPD VOLUNTEER ASSOCIATION PANCAKE FEED

MAY 22ND | BBR FIRE STATION | 9AM - 11AM

13511 HAWKS BEARD SISTERS, OR 97759



Find your Way
WITH OUR MOBILE APP



Find your way with our Mobile App | <https://bbr-or.com/app>

DINING

THE LODGE

12930 Hawks Beard 541-595-1260

LAKESIDE BISTRO

12934 Hawks Beard 541-595-1264

ROBERT'S PUB

13020 Hawks Beard **CLOSED FOR THE SEASON** 541-595-1240

GLAZE GRILL

13525 Ponderosa **CLOSED FOR THE SEASON** 541-595-5953

GMRC SNACK SHOP

13695 Hawks Beard **CLOSED FOR THE SEASON** 541-595-5880

GOLF

BIG MEADOW GOLF

13020 Hawks Beard 541-595-1545

LITTLE MEADOW PUTTING COURSE

13020 Hawks Beard 541-595-1545

GLAZE MEADOW GOLF

13525 Ponderosa 541-595-1270

RECREATION & EQUIPMENT RENTALS

BLACK BUTTE STABLES

13892 Bishops Cap 541-595-2061

GLAZE MEADOW REC CENTER DESK (GMRC)

13695 Hawks Beard 541-595-5881

GLAZE MEADOW EQUIPMENT RENTAL SHOP

13695 Hawks Beard (GMRC) 541-595-5877

LAKESIDE ACTIVITY CENTER

12938 Hawks Beard (LAC) 541-595-1282

GLAZE MEADOW POOL

13695 Hawks Beard 541-595-5881

LAKESIDE POOL

12938 Hawks Beard 541-595-1275

PICKLEBALL | TENNIS

13695 Hawks Beard 541-595-1285

LODGING

WELCOME CENTER

13899 Bishops Cap 541-595-1252

RETAIL | SPA

GENERAL STORE

13890 Bishops Cap 541-595-1222

GLAZE MEADOW SPORTS SHOP

13695 Hawks Beard (GMRC) 541-595-1258

LAKESIDE BISTRO

12934 Hawks Beard 541-595-1264

SPA

13695 Hawks Beard (GMRC) 541-595-5878

BUSINESS, WEDDINGS & EVENTS

CATERING | MEETINGS | PICNIC SHELTER

541-595-1267

POSTAL & BUSINESS CENTER

541-595-1250
Community Center 13895 Bishops Cap

HOMEOWNERS

HOA ADMINISTRATION

13895 Bishops Cap 541-595-1505

OWNER SERVICES

541-595-1527

EMERGENCY 911

FIRE DEPARTMENT

13511 Hawks Beard and Bishop's Cap
Non - emergency dispatch 541-693-6911
EMT's and First Aid Room 541-595-2288

POLICE SERVICES

13885 Bishops Cap near East Meadow Gate
Non - emergency dispatch 541-693-6911
Office 541-595-2191
Officer on Duty DIRECT 541-668-4058

WIFI

GMRC | Lodge | Community Center
Lakeside | Robert's Pub | Welcome Center

All hours of operation and facility use are subject to change without notice. Additional information is available at BlackButteRanch.com

