

*There is a place*



*Activity Guide*

APRIL 2026



**Black Butte  
Ranch**

THERE IS A PLACE

# SOLÉNA



LEARN MORE

## Winemaker's Dinner

Join us for a magical five-course, all-inclusive dinner & wine pairing with legendary winemaker, Laurent Montalieu featuring the celebrated wines of Soléna Estate

**EXCLUSIVE FIVE-COURSE DINNER & WINE PAIRING, ALL-INCLUSIVE | \$145**  
**FRIDAY, APRIL 17TH | 5:30 PM – 8:30 PM** (please RSVP by April 10th)  
**THREE SISTERS EVENT SPACE IN THE LODGE**



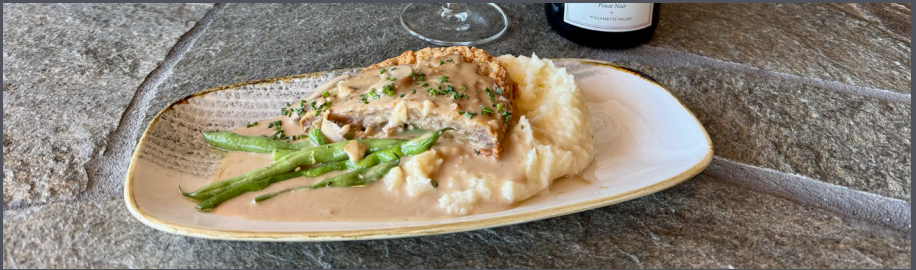
## EVERY MONDAY & THURSDAY 20% OFF + DINNER SPECIALS

JOIN US AT THE LODGE & ASPEN LOUNGE

Reservations Recommended

MONDAY SPECIAL MENU

THURSDAY SPECIAL MENU



# Mother's Day at the Ranch

SUNDAY, MAY 10TH

– BRUNCH –  
10AM -2 PM  
RESERVATIONS REQ.  
541-595-1260

– SPA –  
MOTHER'S DAY  
SPA SPECIALS  
541-595-5878

– GOLF –  
MOM'S GOLF FREE ON  
MOTHER'S DAY!  
541-595-1500

# DINING



*The Lodge was named one of the "50<sup>th</sup> most beautiful restaurants in America."*

People Magazine



## LODGE RESTAURANT

541-595-1260 | 12930 Hawks Beard

Dinner Reservations:  
[www.blackbutteranch.com/dine/#thelodge](http://www.blackbutteranch.com/dine/#thelodge)

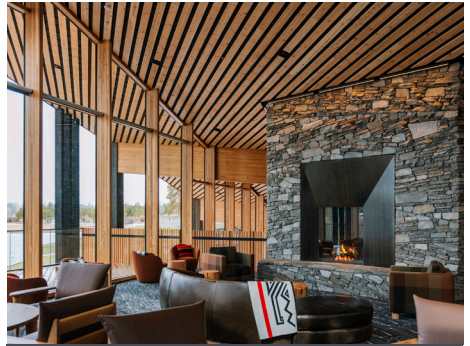
Dinner Sun, Mon, & Thur	5pm - 8pm
----------------------------	-----------

Fri - Sat	4pm - 8pm
-----------	-----------

Tues - Wed	<b>CLOSED</b>
------------	---------------

**20% OFF**  
**+ DINNER & BEVERAGE SPECIALS**  
**MONDAY & THURSDAY NIGHTS**

Excludes alcohol - Reservations Recommended



## ASPEN LOUNGE

541-595-1260 | 12930 Hawks Beard

Thurs - Mon	4pm - 8pm
-------------	-----------

Tues - Wed	<b>CLOSED</b>
------------	---------------

**20% OFF**  
**+ DINNER & BEVERAGE SPECIALS**  
**MONDAY & THURSDAY NIGHTS**

Excludes alcohol - Reservations Recommended



## GENERAL STORE

541-595-1222 | 13890 Bishops Cap

Daily	8am - 6pm
-------	-----------

**ENJOY HOT FOOD ITEMS**  
**+ SEASONAL OFFERINGS**



## LAKESIDE BISTRO

541-595-1264 | 12934 Hawks Beard

Daily	7:30am - 4pm
Breakfast Menu	7:30am - 10:30am
Lunch Menu	11am - 4pm

## GOLF

Cap Special  
EVERY APRIL AT THE RANCH



**GET OUR CAP SPECIAL!**  
18 holes and a cap,  
every April at the Ranch!



## BIG MEADOW GOLF

541-595-1545 | 13020 Hawks Beard

**BIG MEADOW GOLF SHOP** | Daily | 7:30am - Dusk

**BIG MEADOW DRIVING RANGE** | Daily | 7:30am - Dusk

**BIG MEADOW GOLF COURSE** | Daily | 8:00am - Dusk

**BIG MEADOW SNACK SHOP** | Fri - Sun | 7:30am - 4pm

Spring B.A.R. reg is open! May 1-3, 2026  
[bbr-or.com/spring-bar](http://bbr-or.com/spring-bar)



## LITTLE MEADOW

541-595-1545 | 13020 Hawks Beard

\*Courses open weather permitting

**PUTTING COURSE** | Daily | 10am - Dusk  
Weather Permitting

## GLAZE MEADOW GOLF

541-595-1270 | 13525 Ponderosa

**Glaze Meadow Golf Course opens April 30th**

Stay + Play  
A LITTLE LONGER...



Stay + Play Golf Packages  
[bbr-or.com/stay-play](http://bbr-or.com/stay-play)



## WELCOME CENTER

541-595-1252 | 13899 Bishops Cap

When lobby is closed, use the Drive Through Window

**Lobby** | Sun - Wed | 7am - 9pm  
Thurs - Sat | 7am - 10pm

**Drive-Thru** | Sun - Wed | 9pm - 10pm  
Thurs - Sat | 10pm - 11pm

**Reservations** | 9am - 6pm

Gift Cards | Lodging Packages | [BlackButteRanch.com](http://BlackButteRanch.com)

## POSTAL CENTER

13895 Bishops Cap | 541-595-1250 ext. 2

Mon - Fri | 9am - 4pm

12pm cut-off for all outgoing mail

## OWNER SERVICES

541-595-1527 | 71225 McAllister Rd (Sect 5)

Office (M-F) | 6:30am - 5pm

Pit & Refuse (Daily) | 6:30am - 5pm

Note: No dumping of debris after 3:30pm.  
The pit gate will be locked at 4pm.

# LAKESIDE



## LAKESIDE ACTIVITY CENTER

541-595-1282 | 12938 Hawks Beard  
\*Surveillance cameras in use\*

Game Room

9am - 8pm



## LAKESIDE HOT TUB, SAUNA & EXERCISE ROOM

541-595-1275 | 12938 Hawks Beard

Daily

8am - 8pm

Kids welcome after 10am. Gate card needed

- Wipe down equipment after use
- Kids must be 15 to use fitness equipment
- Kids must be 7 to use the hot tub and sauna

## LAKESIDE POOL

541-595-1275 | 12938 Hawks Beard

Closed for season. **For your safety, do not enter the lake and stay off the ice.**

# 20% LODGING DISCOUNT

FOR OREGON RESIDENTS

BOOK YOUR STAY BETWEEN:  
NOW UNTIL - APRIL 28TH, 2026



MENTION "LOCAL25" WHEN YOU  
CALL 855-257-8435  
TO BOOK TODAY

## GUIDED HIKE - PRIVATE TOURS ALONG THE MEADOW



MORE INFO &  
RESERVATIONS:  
[starshine-theater.com/  
black-butte-ranch-  
guided-hike](https://starshine-theater.com/black-butte-ranch-guided-hike)

## STARGAZING

in the Big Meadow

PRIVATE TOURS



MORE INFO &  
RESERVATIONS:  
[starshine-theater.com/  
black-butte-ranch-  
stargazing](https://starshine-theater.com/black-butte-ranch-stargazing)

GROUP TOUR DATES FOR SUMMER  
SEASON AVAILABLE NOW!

# GLAZE MEADOW REC CENTER



## GMRC FACILITY CLOSED APRIL 8 - 9TH, 27TH FOR UTILITY WORK

Indoor pool and steam room closed April 6 - 17th, 27th

South Meadow pool open 9am - 5pm, weather permitting April 6 - 17th and 27th



### GMRC INDOOR POOL

13695 Hawks Beard | 541-595-5881

\*Kids welcome after 10am

April 6 - 17, 27	CLOSED FOR REPAIRS
Adult Lap Swim 4 lanes	7 - 9am
2 lanes	9 - 10am
Adult Swim 2 lanes	9am - 10am
Open Swim	10am - 8pm

### GMRC OUTDOOR POOL

Closed for season

### SOUTH MEADOW POOL

13601 Bishops Cap | 541-595-1276

APRIL 6 - 17, 27	OPEN 9am - 5pm weather permitting
------------------	--------------------------------------



### GMRC HOT TUB, STEAM ROOM & FITNESS ROOM

13695 Hawks Beard | 541-595-5881

April 6 - 17	Steam Room CLOSED FOR REPAIRS
April 8 - 9, 27	CLOSED FOR REPAIRS
Adults Only	7am - 10am
Families* Ages 7+	10am - 8pm

- \* Kids 6 & younger not allowed in hot tub or steam room
- \* Kids 7-14 must be supervised by an adult
- \* Wipe down equipment after use
- \* Kids must be ages 15+ to use fitness equipment

### GMRC EQUIPMENT RENTAL SHOP

13695 Hawks Beard | 541-595-5877

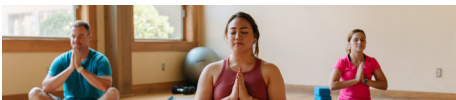
Wed - Sunday	9am - 5pm
April 8 - 9, 27	CLOSED FOR REPAIRS
Mon - Tues	Inquire at GMRC Rec Desk

### NEW SWIM LESSON FORMAT FOR SUMMER 2026

Welcome **Ashley Reiser** as our new swim instructor for 2026.

Whether your child is brand new to the water or ready to build stronger technique, Ashley's lessons are designed to be supportive, confidence-building, and fun — so kids leave each session feeling proud and excited to come back.

Additional information coming in May!



### BARRE CLASSES

Register & pre-pay: [LifeLoveYoga.com](http://LifeLoveYoga.com)

**SATURDAY BARRE** | 10:15am-11:15am

GMRC Yoga Room

# SPA & RETAIL



Massages | Facials | Manicures | Pedicures

**GMRC FACILITY CLOSED APRIL 8 - 9TH, 27TH FOR UTILITY WORK**

## SPA

Glaze Meadow Recreation Center  
13695 Hawks Beard | 541-595-5878

Daily	9:30am - 5pm
April 5th	<b>CLOSED</b> for Easter
April 8 - 9, 27	<b>GMRC Facility CLOSED</b>
April 28	<b>CLOSED FOR REPAIRS</b>

## GLAZE MEADOW SPORTS SHOP

Glaze Meadow Recreation Center  
13695 Hawks Beard | 541-595-1270

Daily	9:30am - 5pm
April 8 - 9, 27	<b>CLOSED FOR REPAIRS</b>

## RETAIL SPECIALS

### LAKESIDE BISTRO HIGHLIGHT

#### STICKERS

A large collection of stickers featuring Black Butte Ranch and Central Oregon designs. \$5.00



## APRIL SPA SPECIALS

### Therapeutic Tuesdays

Enjoy \$20 off our Signature Treatments every Tuesday  
Ranch Signature Massage | Back to Nature Facial  
Signature Pedicure



### Enjoy \$20 off our Signature Treatments every Tuesday throughout April.

Choose from our guest favorites: Ranch Signature Massage, Back to Nature Facial, Signature Pedicure.

### Manicure Mondays

\$20 off Gel Manicures or Pedicures  
Mondays from 11:00 AM - 3:00 PM

Complimentary  
Vital Body CBD Mineral soak & CBD scrub



### Receive \$20 off a Gel Manicure or Pedicure booked on Mondays between 11:00 AM - 3:00 PM.

Enjoy a complimentary upgrade featuring our Vital Body CBD Mineral soak with lavender & bergamot and a relaxing CBD scrub (\$20 value).

## SPA REWARDS CARD

Experience four, 60 or 90 minute treatments and receive the 5th equivalent treatment for FREE! One card per person, cards cannot be combined, and treatments must be received within one calendar year.

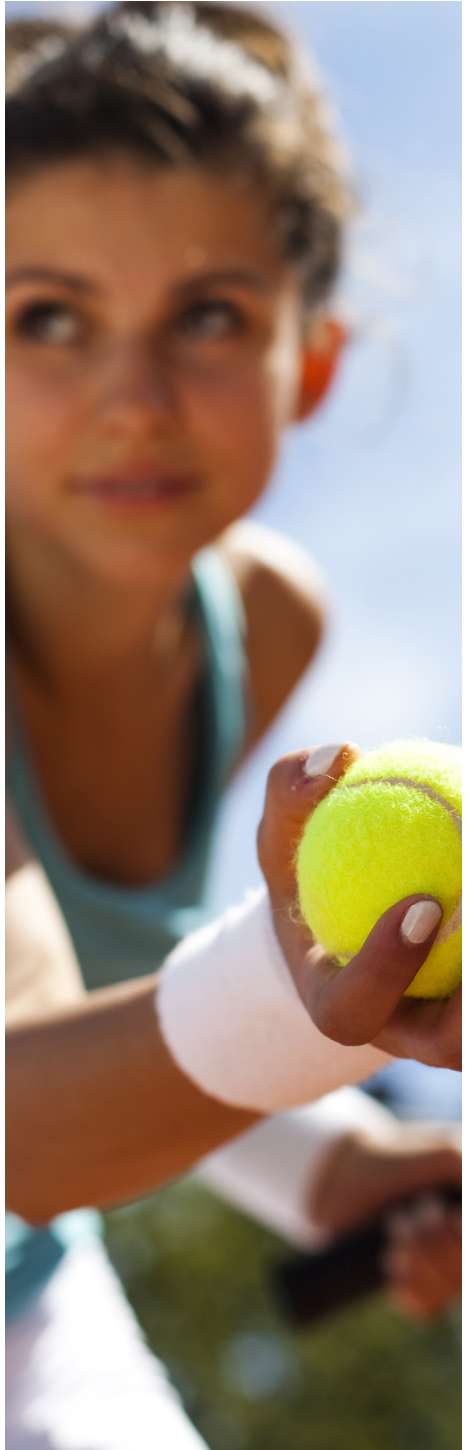


## SHOP OUR ONLINE STORE

Black Butte Ranch style, shipped straight to your door, anywhere in the USA!



# TENNIS & PICKLEBALL



## COURTS

**COURT RESERVATIONS | 541-595-1285**

### RESERVATION COURTS

Courts may be reserved for a maximum of two hours of play per household per day. May be reserved 1 day in advance. Call to book at 541-595-1285 or in-person at Glaze Meadow Rec. Center Desk.

### TENNIS COURTS

<b>Tennis Courts</b> #1 - 2 Big Meadow	Tennis court and pickleball lines on court
Courts #3 - 4 South Meadow	Tennis courts
Courts #5 - 9 Glaze Meadow	Tennis only #7 - 9 lights 1 hour of play / home site / day Courts lit until 11pm
Courts #10 - 11 Glaze Meadow	Teaching Courts: limited availability

### NON-RESERVATION COURTS

Limit time to 1 hour when others are waiting

Courts #12 - 13 Upper Glaze Meadow	Tennis court and pickleball lines on court
---------------------------------------	--

### PICKLEBALL COURTS

<b>Pickleball Courts</b> #1 - 4 Family Rec Area	Pickleball lines on court
<b>Pickleball Courts</b> #5 - 12 Glaze Meadow	Pickleball lines on court

# TENNIS & PICKLEBALL

## TENNIS INSTRUCTION

### NEW INSTRUCTORS

We are proud to welcome **Jed Kizziar** as our Head Tennis Instructor for the summer! Jed is a Sisters High School graduate. He played #1 singles and doubles for four years at Sisters High School as well as two years in college at Linfield University. Jed also coached high school tennis for four years at Sisters High School and for one year at Sherwood High School. He is passionate about tennis and sharing it with others. According to Jed, "Black Butte Ranch is one of my favorite places in the world and I look forward to teaching at the Ranch this summer!"

Tennis Classes

Begin May 16



## PICKLE BALL INSTRUCTION

### NEW INSTRUCTORS

We are thrilled to welcome **Mitch Foster** as our Head Pickleball Pro for the summer season! Joining us from the renowned JW Marriott Desert Ridge in Scottsdale, Arizona, Mitch brings an incredible 19 years of playing experience and a genuine passion for building a vibrant, high-energy pickleball community. His competitive history is highlighted by multiple Junior National Titles in Singles, Doubles, and Mixed divisions—a skill set he began honing early under the mentorship of his mother, a multi-time National Champion and 30-year coaching veteran. With six years of professional coaching under his belt, Mitch is known for his friendly, approachable style and is uniquely equipped to help our homeowners and guests refine their strategy and elevate their game. Whether you're picking up a paddle for the first time or looking to dominate the kitchen line, Mitch is here to make sure you have a blast while leveling up your play!

Pickle Ball  
Classes

Begin June 1



## BE PREPARED FOR EMERGENCIES

# BE READY. GET SET. GO!

*Know evacuation levels and follow advice of emergency officials*

### Level 1: BE READY

#### **BE AWARE – DANGER IN THE AREA PREPARE TO EVACUATE**

- Monitor emergency services websites and local news media
- Opt-in with Deschutes County to receive local Emergency Alerts
- Have your Emergency Plan and Go-Kit ready

### Level 2: GET SET

#### **SIGNIFICANT DANGER IN THE AREA – PREPARE TO LEAVE**

- Conditions can change rapidly - this may be the only notice you receive
- Time to act - follow your Emergency Plan
- Relocate to a safe place and let loved ones know you are safe

### Level 3: GO!

#### **DANGER IS IMMINENT**

- Leave without delay, it is unsafe to stay
- Do not gather belongings or stay to protect the home
- Emergency services may not be able to assist you

*In the event of evacuation, signs will be placed on evacuation routes*



APPLY NOW

*Join us in Recreation.*

Lead Activities,  
Staff an Info Desk,  
Rent Equipment,  
or Lifeguard!

**NOW HIRING FOR SUMMER**  
**We need lifeguards!**

# IN A LANDSCAPE



## “IN A LANDSCAPE” CONCERT 2026

June 15 | 6pm – 7:30pm - June 16 | 6pm – 7:30pm - June 17 | 6pm – 7:30pm

DON'T MISS OUT! Black Butte Ranch is offering a variety of lodging specials along with food and beverage services, including a la carte Charcuterie Boxes, a Ranch BBQ Buffet or a VIP dining experience on the Aspen Lounge deck with seated viewing of the concert.

Lodge Restaurant reservations recommended

SMALL CHOICE, BIG IMPACT

## Native Plant Sale

May 23, 2026 10AM - 2PM

BLACK BUTTE RANCH GENERAL STORE

13890 Bishops Cap, Sisters, OR 97759

PLANTS FOR SALE

### FORBS/PERENNIALS

- Yarrow
- Penstemon
- Oregon Sunshine
- Wild Blue Flax
- Large-Leaved Lupine

### GRASSES

- Idaho Fescue
- Prairie Junegrass

### TREES

- Vine Maple

### SHRUBS

- Twinberry Honeysuckle
- Oregon Grape
- Dogwood
- Golden Currant

PAYMENTS ACCEPTED

Cash, Check, Credit Card, or Venmo



SPONSORED BY



BLACK BUTTE CONSERVANCY

Pre-Order QR Code  
Active May 1-15

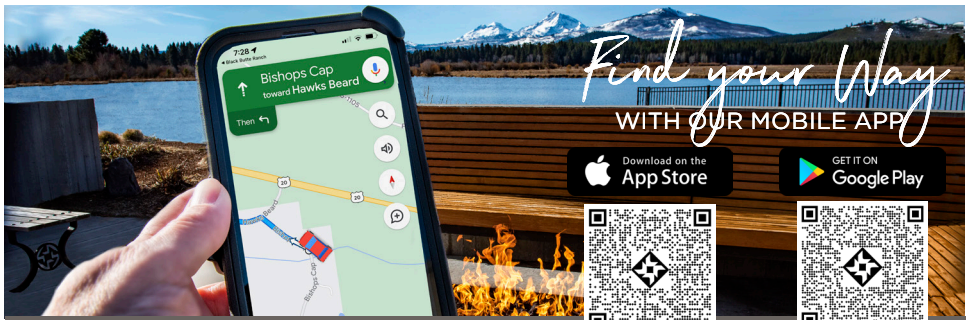


## BLACK BUTTE RANCH



COFFEE WITH A Cop

May 1st 9:30am  
at Lakeside Bistro  
FREE COFFEE & SNACKS



Find your way with our Mobile App | <https://bbr-or.com/app>

**DINING**

- THE LODGE**  
12930 Hawks Beard 541-595-1260
- LAKESIDE BISTRO**  
12934 Hawks Beard 541-595-1264
- ROBERT'S PUB** CLOSED FOR THE SEASON  
13020 Hawks Beard 541-595-1240
- GLAZE GRILL** CLOSED FOR THE SEASON  
13525 Ponderosa 541-595-5953
- GMRC SNACK SHOP** CLOSED FOR THE SEASON  
13695 Hawks Beard 541-595-5880

**GOLF**

- BIG MEADOW GOLF**  
13020 Hawks Beard 541-595-1545
- LITTLE MEADOW PUTTING COURSE**  
13020 Hawks Beard 541-595-1545
- GLAZE MEADOW GOLF**  
13525 Ponderosa 541-595-1270

**RECREATION & EQUIPMENT RENTALS**

- BLACK BUTTE STABLES**  
13892 Bishops Cap 541-595-2061
- GLAZE MEADOW REC CENTER DESK** (GMRC)  
13695 Hawks Beard 541-595-5881
- GLAZE MEADOW EQUIPMENT RENTAL SHOP**  
13695 Hawks Beard (GMRC) 541-595-5877
- GLAZE MEADOW POOL**  
13695 Hawks Beard 541-595-5881
- PICKLEBALL | TENNIS**  
13695 Hawks Beard 541-595-1285

**LODGING**

- WELCOME CENTER**  
13899 Bishops Cap 541-595-1252

**RETAIL | SPA**

- GENERAL STORE**  
13890 Bishops Cap 541-595-1222
- GLAZE MEADOW SPORTS SHOP**  
13695 Hawks Beard (GMRC) 541-595-1258
- LAKESIDE BISTRO**  
12934 Hawks Beard 541-595-1264
- SPA**  
13695 Hawks Beard (GMRC) 541-595-5878

**BUSINESS, WEDDINGS & EVENTS**

- CATERING | MEETINGS | PICNIC SHELTER**  
541-595-1267
- POSTAL & BUSINESS CENTER** 541-595-1250  
Community Center 13895 Bishops Cap

**HOMEOWNERS**

- HOA ADMINISTRATION**  
13895 Bishops Cap 541-595-1505
- OWNER SERVICES** 541-595-1527

**EMERGENCY 911**

- FIRE DEPARTMENT**  
13511 Hawks Beard and Bishop's Cap  
Non - emergency dispatch 541-693-6911  
EMT's and First Aid Room 541-595-2288

**POLICE SERVICES**

- 13885 Bishops Cap near East Meadow Gate  
Non - emergency dispatch 541-693-6911  
Office 541-595-2191  
Officer on Duty DIRECT 541-668-4058

**WIFI**

GMRC | Lodge | Community Center  
Lakeside | Robert's Pub | Welcome Center

All hours of operation and facility use are subject to change without notice. Additional information is available at [BlackButteRanch.com](http://BlackButteRanch.com)

