

**FOR IMMEDIATE RELEASE**

April 24, 2023

**CONTACTS:**

Calvin Brawner, Hacker Architecture and Interior Design, 503-227-1254

[cbrawner@hackerarchitects.com](mailto:cbrawner@hackerarchitects.com)

Kate Murphy, Cameron MacAllister Group, 503-701-0713

[murphy@cameronmacallister.com](mailto:murphy@cameronmacallister.com)

**BLACK BUTTE RANCH TO PUBLICLY UNVEIL NEW \$20 MILLION LODGE WITH GRAND  
OPENING ON MAY 1**

**Black Butte Ranch replaced 50-year-old Lodge with beautiful 22,100-square-foot facility that includes restaurant and bar, second floor lounge, fireside room, private dining room, event space, meeting room, outdoor dining, and a state-of-the-art kitchen**

(BLACK BUTTE RANCH, Ore.)—Black Butte Ranch in Central Oregon will unveil its newest amenity on May 1 when it celebrates the grand opening of its flagship \$20 million dining and meeting facility. The new 22,100-square-foot Lodge includes a restaurant and bar, second-floor lounge and bar, private dining room, event space, meeting room, outdoor dining, and state-of-the-art kitchen that includes a catering facility.

The Lodge is a cornerstone addition to the Lakeside area of Black Butte Ranch, which comes on the heels of the \$11.5 million Lakeside Recreation Complex that opened to the public in 2015. Combined with the Lakeside complex, the Lodge is the main hub of activity for Black Butte Ranch.

“This is an important step for Black Butte Ranch, bringing to completion a reimagining of the heart of one of the Northwest’s most celebrated and treasured destination resorts,” said Shawn McCance, CEO of Black Butte Ranch. “We are thankful that we’ve had so much support from our homeowners and are excited to invite them – and our resort guests – to make new memories at the Lodge.”

The new Lodge replaces Black Butte Ranch's 50-year-old original lodge, which was removed to make space for the new building. Designed to frame the property's stunning panoramic views of the Cascade Range, the new Lodge is home to the Lodge Restaurant, Aspen Lounge, expansive decks, and an indoor/outdoor event space.

This is the newest in a line of significant reinvestments that Black Butte Ranch and its homeowners have made over the last decade, continually improving the facilities for both owners and guests. In 2012, Black Butte Ranch teed up its \$3.75 million John Fought redesign of Glaze Meadow, one of two championship golf courses at Black Butte Ranch. Glaze Meadow was well-received by golfers of all levels and has since hosted some of the most prestigious tournaments in the Northwest, including the 2016 Oregon Amateur Championship.

In 2015, Black Butte Ranch opened the Lakeside Recreation Complex, which includes a gorgeous outdoor pool, hot tub, sauna, poolside food and beverage service, state-of-the-art fitness center, recreation center, equipment rentals, children's playground, as well as the Lakeside Bistro. In 2020, Black Butte Ranch unveiled The General Store, a popular amenity near the main entrance to the ranch that offers food, growler refills, wine, local products, and curated gifts. And later in 2020, Black Butte Ranch put finishing touches on the Little Meadow Putting Course, another Fought design that has unquestionably become one of Black Butte Ranch's favorite attractions since the 12-hole course opened.

The new Lodge was designed by [Hacker Architects](#), which has design studios in Bend and Portland, with the bulk of construction work performed by [Kirby Nagelhout Construction](#) of Bend. Landscape design was provided by Walker Macy Landscape Architecture of Portland. All three companies also collaborated on the Lakeside Recreation Complex and General Store.

"The Black Butte Ranch lodge is the culmination of our work to create a series of buildings that complement the natural beauty and stunning geology surrounding the Ranch," said Corey Martin, principal designer at Hacker Architects. "We have created spaces that feel warm and sheltering while also very connected to the landscape. We integrated the ideas and input from as many homeowners as possible and feel like the design has something special for everyone."

The design takes some cues from the original lodge, while creating more direct connections with the surrounding landscape. The exterior is clad in charred cedar siding known as Shou Sugi Ban. The interior spaces are clad in a palette of contrasting dark and light finished douglas fir, slate and ceramic tiles, with fabrics inspired by woven Pendleton blankets. The open wood structure includes massive glue laminated beams supported by large louvered screening elements, randomly spaced to blend with the nearby trunks of the massive Ponderosa pines and Aspen trees surrounding the site. A large central fireplace is constructed from stone, arranged in a pattern inspired by the flow of volcanic rock in Central Oregon.

Most trees on the site were preserved, with one large ponderosa that was removed being harvested to provide the wood for the restaurant and bar tables and benches within the spaces.

“For more than a half-century Black Butte Ranch has been a place to gather, for both families and friends, in a sublime Central Oregon setting,” McCance said. “As part of our commitment to continually improve the experience for homeowners and guests, the new Lodge is unmatched in the region. This will ultimately ensure that Black Butte Ranch remains a special place in the heart of Central Oregon for the next half century and beyond.”

For more information, visit [www.blackbutteranch.com/lodge-project/](http://www.blackbutteranch.com/lodge-project/)





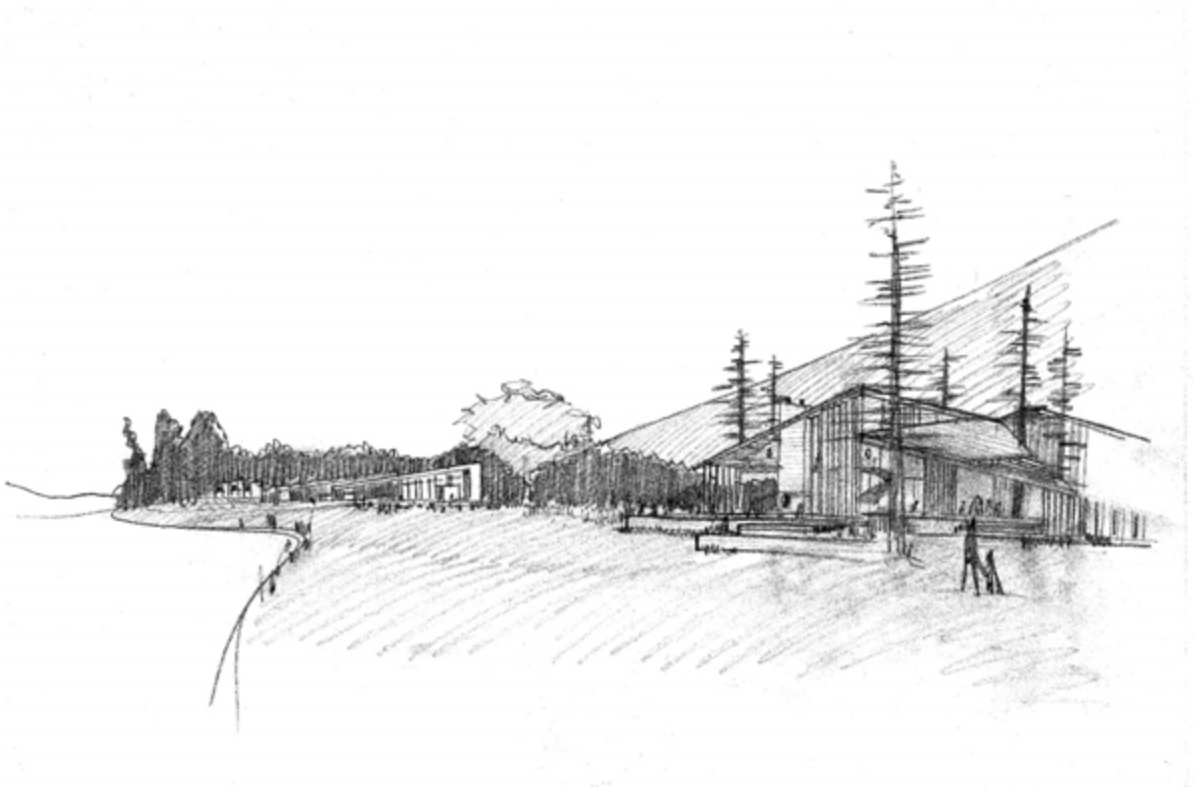












### **About Black Butte Ranch**

Since 1970, Black Butte Ranch has offered a unique, family-oriented Central Oregon experience at the foot of the gorgeous Cascade Range. The sweeping 1,800-acre destination resort features sweeping views of the surrounding peaks — including the Three Sisters, Mount Washington, Black Butte, Broken Top, Three Fingered Jack, and Mount Jefferson — and endless outdoor opportunities. The family-friendly property offers an array of lodging accommodations, two championship golf courses, putting course, five swimming pools, award-winning restaurants, and a full-service spa. For more information:

[BlackButteRanch.com](http://BlackButteRanch.com).

### **About Hacker**

Hacker is a 50-person architecture and interior design firm with studios in Bend and Portland. Over the last 40 years, Hacker has been working in Central Oregon to create architecture inspired by the unique qualities of the region's landscape, history, and culture. This work has included some of the most significant civic buildings in the region, including the High Desert Museum, Bend Public Library, and Unitarian Universalist Fellowship of

Central Oregon. Our work for Black Butte Ranch began over 10 years ago with the regionally acclaimed Lakeside Community Center followed by the General Store and a renovation of an original country house condo. Creating designs that make people feel more connection to the landscape is central to our firm's design philosophy, and while we seek out inspiration from the landscape in all our projects, Central Oregon has proven time and again to be a particularly important source of inspiration for our firm.

[Hackerarchitects.com](http://Hackerarchitects.com)

###