



**Black Butte  
Ranch®**

THERE IS A PLACE

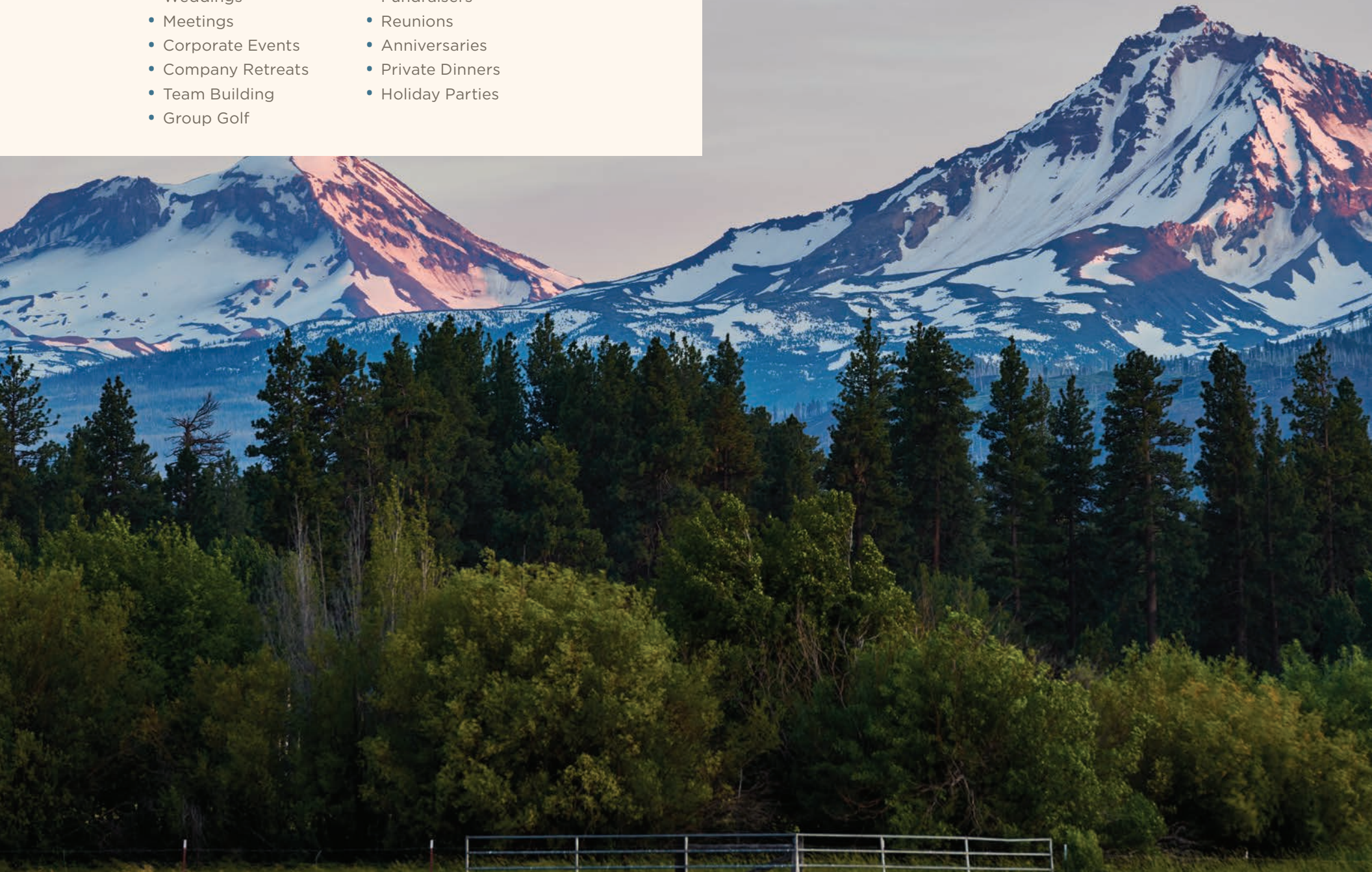
*Meetings & Events*



*We've got the space for all of your needs*



- Weddings
- Meetings
- Corporate Events
- Company Retreats
- Team Building
- Group Golf
- Fundraisers
- Reunions
- Anniversaries
- Private Dinners
- Holiday Parties







Appreciate an intimate, tranquil meeting environment amidst spectacular Pacific Northwest scenery. Whether you're looking for a corporate retreat venue or an idyllic spot for a family reunion, Black Butte Ranch will exceed your expectations.

Black Butte Ranch not only provides an unparalleled natural setting, but also features comfortable accommodations, exceptional farm-to-table cuisine and abundant outdoor activities. Our professional team ensures that every detail of your meeting is thoughtfully addressed, so your group can reconnect, relax and unwind.

In addition to 1,800 acres of inspiring elbow room, your group will experience:

- Sweeping, unparalleled views
- 3,500 square feet of indoor meeting space, plus a variety of outdoor venues and gathering areas
- Complimentary wireless internet access in vacation homes and meeting spaces
- Award-winning dining and custom menu planning
- Two championship golf courses
- A full-service day spa
- Six swimming pools
- 17 tennis courts
- Custom team building activities
- Creative break options to keep participants alert and engaged
- Natural lighting in meeting rooms
- A recreation center with fitness facilities, a steam room, hot tub and indoor/outdoor pool complex, equipment rentals and a sports shop
- A recreation area with a full basketball court, four pickle ball courts, two bocci ball courts and two horseshoe pits
- Horseback riding
- 18 miles of paved biking trails
- Over 100 vacation homes, from private Lodge Rooms to one, two, and three bedroom condos and spacious custom homes
- Convenient access to some of the finest fly-fishing and whitewater rafting you'll find anywhere





## Event Venues

The Lodge at Black Butte Ranch is an exemplary Central Oregon venue for your most meaningful occasions. Situated in one of the most scenic locations on the Ranch, the Lodge features two newly-remodeled private meeting rooms, a large banquet room leading to an expansive deck with sweeping lake and Cascade Mountain views and the award-winning Lodge Restaurant.

Besides the Lodge, we have locations at the Community Center, Lakeside Bistro, and Sports Pavilion.







## *Black Butte Ranch Event Spaces*

### THE LODGE ABBOTT AND SPARKS ROOMS

This tastefully-remodeled meeting space, directly off the Lodge foyer, reflects the Lodge's rustic charm. These intimate, private rooms feature vaulted ceilings, bright windows offering natural light, iron chandeliers, spot lighting and a warm, inviting space. They are ideal for small board meetings, break-out sessions or a private dining experience.

The Abbott Room features an LCD TV, complimentary wireless internet and accommodates 30 guests in a classroom setting. A charming, hand-made sliding barn door separates the Abbott Room from the Sparks, allowing for a separate break out space or dining setup. When opened, the combined rooms boast nearly 700 square feet of space and function elegantly as a private reception area.

The Sparks Room is equally inviting, featuring a sumptuous mahogany table excellent for a meeting break or private dinner for up to 14 guests. Any of our specialty meeting breaks and menu services can be added to create a unique experience that will be both stimulating and impactful.

#### THE LODGE ABBOTT ROOM

SQ FT	DIMENSIONS	BOARD ROOM	CLASSROOM	THEATER	BANQUET	RECEPTION
456	24' X 19'	22	30	40	32	32

#### THE LODGE SPARKS ROOM

SQ FT	DIMENSIONS	BOARD ROOM	CLASSROOM	THEATER	BANQUET	RECEPTION
336	24' X 14'	14	20	30	24	24







### THE LODGE BROOKS ROOM

SQ FT	DIMENSIONS	BOARD ROOM	CLASSROOM	THEATER	BANQUET	RECEPTION
1101	15' X 73'	24	N/A	60	50	65

The Brooks Room provides a semi-private indoor reception and dining environment. This scenic space overlooks the majestic Cascade Mountains and has direct access to the expansive Lodge Deck, lawn and fire ring area for outdoor seating options and breaks. The Brooks Room is ideal for a banquet or reception, offering abundant natural light and a private bar area.

### THE LODGE DECK & LAWN

SQ FT	DIMENSIONS	BOARD ROOM	CLASSROOM	THEATER	BANQUET	RECEPTION
3000	N/A	N/A	N/A	N/A	175+	175+

The expansive Lodge Deck, gorgeously flanked by cascading petunias in the summer, is a stunning setting for your function. Utilize the deck for dinner service or a cocktail reception. Gather round the adjacent firepit to unwind from the day's festivities.

### THE LODGE LAMBERT ROOM

SQ FT	DIMENSIONS	BOARD ROOM	CLASSROOM	THEATER	BANQUET	RECEPTION
735	15' X 45'	N/A	N/A	N/A	45	N/A

The Lambert Room is a two-tiered private dining area located inside The Lodge Restaurant. Guests can enjoy the restaurant's Northwest-inspired cuisine or work with our catering team to develop a custom menu, uniquely prepared for the event.

### THE LODGE LAMBERT ROOM DECK

SQ FT	DIMENSIONS	BOARD ROOM	CLASSROOM	THEATER	BANQUET	RECEPTION
800	20' X 40'	N/A	N/A	N/A	50	65

The secluded Lambert Deck is located behind the Lodge and overlooks horse pastures, Broken Top and the Three Sisters, and Phalarope Lake. Dine on the cedar deck or enjoy your event on the adjacent lawn beneath towering Ponderosa pines.







## THE NORTH & SOUTH SISTER MEETING ROOMS

SQ FT	DIMENSIONS	BOARD ROOM	CLASSROOM	THEATER	BANQUET	RECEPTION
1800	30' X 60'	58	100	120	100	100



## THE NORTH OR SOUTH SISTER MEETING ROOM

SQ FT	DIMENSIONS	BOARD ROOM	CLASSROOM	THEATER	BANQUET	RECEPTION
900	30' X 30'	30	50	60	48	N/A

The North & South Sister Rooms are located in our Community Center. As one meeting room, this venue is suited for classroom-style meetings of up to 85 people, and provides ample space to convene in an indoor environment with abundant natural light. When divided, either room may be used as a smaller meeting space with the other serving as a break-out room, dining area or private working site.

## BIG MEADOW PAVILION AT THE SPORTS FIELD

SQ FT	DIMENSIONS	BOARD ROOM	CLASSROOM	THEATER	BANQUET	RECEPTION
N/A	N/A	N/A	N/A	N/A	24	200*

This outdoor venue is ideal for any fun-filled occasion. From rehearsal dinners to family reunions, the venue features ample space for catering, as well as sand volleyball, basketball, disc golf, and soccer nets. The rustic pavilion with built-in string lights sets the mood for your event.

*\* Unlimited Potential*





## Black Butte Ranch Meeting Packages



This tastefully-remodeled meeting space, directly off the Lodge foyer, reflects the Lodge's rustic charm. These intimate, private rooms feature vaulted ceilings, bright windows offering natural light, iron chandeliers, spot lighting and a warm, inviting space. They are ideal for small board meetings, break-out sessions or a private dining experience.





# Black Butte Ranch Meeting Packages

## THE ABBOTT/SPARKS EXECUTIVE MEETING SPACE

For groups up to 25 people | Valid within 60 days of the meeting date | Custom Packages available

### MORNING MEETING | 8AM-11AM (3 HRS)

**Site Fee:** \$200

**Price Per Person:** \$30 all inclusive

**Includes:**

- A/V - LCD TV with DHI and wireless connectivity
- Notepads and Pens
- Candies
- Water Service
- Coffee and Tea Service
- Beverage Refresh Throughout Meeting

**The Retreat Breakfast**

- » Fresh Fruit, Assorted Breakfast Pastries, Scrambled Eggs w/ Cheddar, Seasoned Breakfast Potatoes, Black Pepper Bacon and Maple Sage Sausage Links

### MID-DAY MEETING | 8AM-2PM (6 HRS)

**Site Fee:** \$400

**Price Per Person:** \$55 all inclusive

**Includes:**

- A/V - LCD TV with DHI and wireless connectivity
- Notepads and Pens
- Candies
- Water Service
- Coffee and Tea Service
- Beverage Refresh Throughout Meeting

**The Retreat Breakfast**

- » Fresh Fruit, Assorted Breakfast Pastries, Scrambled Eggs w/ Cheddar, Seasoned Breakfast Potatoes, Black Pepper Bacon and Maple Sage Sausage Links

**Choice of Sandwich**

- (Turkey, Roast Beef, Ham, Grilled Veggie, Chicken or Tuna)
- » Select up to 3 kinds of Sandwiches
  - » Includes an apple, a cookie and a bag of chips

### ALL-DAY MEETING | 8AM-5PM (9 HRS)

**Site Fee:** \$500

**Price Per Person:** \$99 all inclusive

**Includes:**

- A/V - LCD TV with DHI and wireless connectivity
- Notepads and Pens
- Candies
- Water Service
- Coffee and Tea Service
- Beverage Refresh Throughout Meeting

**The Retreat Breakfast**

- » Fresh Fruit, Assorted Breakfast Pastries, Scrambled Eggs w/ Cheddar, Seasoned Breakfast Potatoes, Black Pepper Bacon and Maple Sage Sausage Links

**Choice of Sandwich**

- (Turkey, Roast Beef, Ham, Grilled Veggie, Chicken or Tuna)
- » Select up to 3 kinds of Sandwiches
  - » Includes an apple, a cookie and a bag of chips

**Choice of Themed Buffet for Dinner**

- » **All American Theme:** Burgers and salad
- » **Italian Theme:** Pasta with sauces, salad and breadsticks
- » **Mexican Theme:** Make your own tacos, fajitas and enchiladas



Event Catering & Services







## CATERING

The culinary experts and banquet staff at Black Butte Ranch strive to make each catered experience special. The finest ingredients and unbounded creativity are brought together to provide you with a delicious adventure in Northwest cuisine.

Our menus bring a true farm-to-table experience and can be customized to please even the most discriminating palate. Whether an intimate gathering or a full-service banquet, you can be assured that your special event will reflect an individualism that will set you apart.

## BLACK BUTTE RANCH MENU CATEGORIES

- Hors d'Oeuvres & Small Plates
- Evening Buffets
- Build Your Own Custom Buffet
- Plated Dinner
- Family Style Dining
- Breakfast Selections
- Lunch Buffets
- Cakes & Cupcakes
- Beverages
- Morning and Afternoon Breaks





*Accommodations*







Your guests will appreciate attending a memorable celebration and lodging in tastefully decorated accommodations. Select from a variety of lodging options— from private lodge rooms and two-and-three bedroom condos to spacious six bedroom custom homes. Each vacation home at Black Butte Ranch provides a truly unique experience for your guests and will be a special place for capturing memories.

Homes are situated throughout the Ranch's unspoiled harmonious setting—with easy access to golf, tennis, dining, swimming pools, bike paths and spa. We can also assist you in reserving multiple homes within close proximity to one another so your wedding party and guests can convene easily.

<b>LODGE ROOMS</b> 1-2 bedrooms 1 bath	<b>LODGE, COUNTRY HOUSE &amp; GOLF CONDOS</b> 1-3 bedrooms 1-2 baths	<b>CABINS</b> 1-3 bedrooms 2 baths	<b>CUSTOM HOMES</b> 3-6 bedrooms 2-7 baths
--	--	--	--

Guests check in at our Welcome Center, located at 13899 Bishops Cap, Black Butte Ranch, Oregon 97759, to register vehicles for access to the Ranch.



## Team Building Activities



---

**OLYMPICS**

**LINKS & DRINKS**

**GOLF EVENT**

**BIKE**

**HIKE**

**RUN**

**SWIM**

**TENNIS**

**PICKLEBALL**

**SUP**

**HORSE RIDING**

**RAFT**

**FLY FISH**

---







### TRAIL RIDES

Grab your boots and saddle up for a horseback ride at the Black Butte Stables! Join the guides and their gentle, trail-wise horses for a classic trail ride and explore the forested trails of Central Oregon. Guided rides are available year round and all experience levels are welcome. The Stables also offers customized adventures tailored for your group.



### TENNIS SOCIALS

Our tennis pro will set up a round-robin play experience for your group. Minimum of 4 people required. Available June-September. Price: TBD

### OLYMPICS | RELAY RACES

Have a friendly competition amongst teams in a variety of customizable challenges. Players work in teams to complete tasks in the shortest time possible.

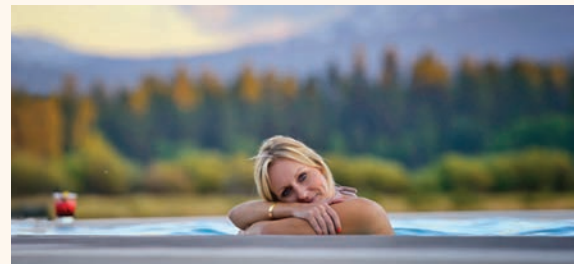
### BIKE RENTALS

Our Rental Shop's fleet of Giant Bicycles includes Sedona hybrid bikes, E-bikes, Talon 27.5 mountain bikes and a range of youth bikes, plus trailers and tagalongs to tow the kids. Choose from a selection of road bikes for putting in miles on the pavement and beach cruisers with baskets for your pool gear. Come check out and spin the new rental fleet-bikes for everyone.



### CANOES, KAYAKS, STAND UP PADDLEBOARDS

Canoe, kayak or stand up paddleboard on the calm waters of Phalarope Lake at the Ranch. Equipment is for rent. Standup Paddleboard and Kayak classes are also available.



Each of the six swimming pools at Black Butte Ranch was designed for more than just taking a swim. They are sanctuaries where you can relax in the sun, read a good book, and take in the natural splendor and spectacular mountain views. When not in the water, guests can lounge on comfortable chairs under shady umbrellas while savoring food and refreshments from our Bistro and Snack Shops.



### SPA

The Spa at Black Butte Ranch offers a wide range of relaxing and rejuvenating treatments including massages, body treatments, facials and a variety of pampering for the hands and feet.

Let our Spa Specialists come to you—the Spa offers in-home and on-site mini spa treatments including nails, reflexology and chair massage, or you can opt for private, specially customized sessions.

### YOGA INSTRUCTION

Personalized yoga instruction for your group with an instructor to meet the needs of your group. \$15 pp / one hour.

### RANCH PHOTO HUNT

Unravel our Ranch riddles as you compete against other teams to get to the finish line first! This event works best if participants are on bikes (available to rent at the Glaze Meadow Equipment Rental Shop).



### DISC GOLF RALLY

Bring your team out to the disc golf course on the Ranch for a friendly competition. \$5 per person equipment rental. Snacks or other food and beverages are available for an additional fee.



*36 Holes of Championship Golf*



*Big Meadow #10*



---

## Golf

Situated at the foot of the majestic, snow-capped peaks of the Cascade Range in the heart of Central Oregon, Black Butte Ranch is one of the state's most highly regarded golf and recreational resorts. Black Butte Ranch features two scenic and challenging championship courses that deliver an authentic Oregon golf experience. Sculpted fairways intertwine with Aspen groves while Ponderosa Pine trees frame breathtaking views of the Cascade Mountains, offering the best of what makes Central Oregon a premier golf destination.

Black Butte Ranch provides one of the most beautiful and fun golfing experiences in the Pacific Northwest. Group golf and tournament packages (for 9 or more players) are available, and include reduced greens fees, cart, range balls, personalized cart signs, score sheets, special event setup and full tournament coordination. Full concierge service includes on- and off-site golf, lodging, dining, brewery tours, transportation and more.

Glaze Meadow golf course was originally designed by Gene "Bunny" Mason in 1978, and offers a test that will appeal to fans of both classic and modern golf design, with five sets of tees on every hole to accommodate players of all skill levels. The \$3.75M redesign completed in 2012 by architect John Fought turned Glaze Meadow into a 7,007-yard classically inspired gem.

Big Meadow, a 7,002-yard course originally designed by Robert Muir Graves in 1970, and redesigned in 2007 by Damian Pascuzzo, presents generous fairways, accessible greens, and panoramic views. Every component of the course is integrated into the spectacular mountain setting, providing an unforgettable round regardless of the scorecard.

If you're looking for a casual group activity, consider a putting challenge on our 18,000 square foot putting green at Glaze Meadow golf course. Our teams will set-up an 18 hole putting course for you and your group. We will provide everything you need – balls, clubs, scorecards, and staff for a mini tournament and award a winner at the end. Add food and beverages to make this a memorable event for the whole party.



*Glaze Meadow # 3-4*



## *Links & Drinks*

Fun team building events for golfers of different skill levels, all scheduled to last around 2 hours





## PAR:

### LITTLE MEADOW PUTTING CHALLENGE

*This event is fun for golfers of all sizes, ages and skill levels.*

Enjoy fun competition on the new Little Meadow Putting Course. Our golf teams will set up a 12 hole challenge for you and your group.

We will provide balls, clubs, scorecards, and staff to run a mini tournament and award a winner at the end.

## BIRDIE:

### APPROACH, CHIP & PUTT CHALLENGE

*This event is fun for golfers who know how to swing a club (newbie to pro)*

Turn up the competitive juices in this challenge of all the major swings in golf. Groups will be divided into teams and given a team color (Corresponding Volvik colored balls provided). A Black Butte Ranch Golf Professional will lead the teams between stations and give tips along the way.

The groups will all complete in (3) challenges with the best score total winning:

- **Approach:** to a hole (inside 100 yards) for a “closest to the pin” challenge for points.
- **Chip** a ball inside 6 feet of the hole from various points for different point total.
- **Putt** from different distances for points.

Team with highest total wins!

## EAGLE:

### 9 HOLE SCRAMBLE GOLF

*This event is great for a group of varied level golfers*

Have a group of golfers that want to try a taste of the course? We have 36 holes of championship level golf that are ready for your team.

Divide players into teams of 2,3, or 4 players. All players tee off on each hole, and the players decide which shot is the best one. All other players pick up their balls, and everyone goes to the location of the chosen ball. All players hit their balls from this spot, and then everyone decides which shot is best. Play continues in this manner until the ball is holed. Once the ball gets on the green, the procedure is the same. Every player putts from the spot of the best ball. The team's score is the total number of strokes it takes to put the ball in the hole.

We can also set-up Longest Drive contests and Closest to the Pin contests for the group to add some competition. Add a beverage cart to enjoy on the course and a BBQ dinner at the end.

### LITTLE MEADOW PUTTING CHALLENGE

\$12 per person  
Add Food and Beverages to make this a full evening reception.

### APPROACH, CHIP & PUTT CHALLENGE

\$75 per person  
(\$500 minimum)  
Add food and a bar to loosen up the tightest swing.

### 9-HOLE SCRAMBLE GOLF

Starting at \$80 per person  
Rental clubs, cart and range balls included.



*Guided Adventures*







*For unique business meeting ideas, consider a group outing from one of our favorite local outfitters.*



#### **WHITEWATER RAFTING**

There's nothing better on a hot day than a wild ride down the river! The beautiful McKenzie River is just a short drive west of the Ranch; local outfitters also offer rafting trips on the Deschutes and North Santiam rivers.

#### **OUZEL OUTFITTERS**

**800-788-7238 | [OregonRafting.com](http://OregonRafting.com)**

#### **SUN COUNTRY TOURS**

**541-382-1709 | [SunCountryTours.com](http://SunCountryTours.com)**



#### **ROCK CLIMBING**

##### **FIRST ASCENT CLIMBING SERVICES**

**1-866-climb11 | [GoClimbing.com](http://GoClimbing.com)**

First Ascent Climbing offers specialized climbing services at Smith Rock State Park. Clinics, private guided day trips, and customized group programs are a way to share a memorable, fun bonding experience that you can bring back with you.

Rock climbing can be a great activity to stimulate individual challenge and is a great way to analyze and shape how we work together as a team or group. First Ascent customizes your climbing day and facilitates activities that support your goals and needs.



#### **DOWNHILL MOUNTAIN BIKE TOUR**

**800-296-0562 | [PaulinaPlunge.com](http://PaulinaPlunge.com)**

The Paulina Plunge Downhill & Waterfall Mountain Bike Tour guides you along Paulina Creek. Riding natural waterslides is a highlight! For active people, ages 4 +; bike & helmet included.



#### **NATURALIST GUIDED TRIPS**

##### **WANDERLUST TOURS**

**800-962-2862 | [WanderlustTours.com](http://WanderlustTours.com)**

Wanderlust Tours naturalist guides take you on a fun adventure to seek out the beauty of Central Oregon's lakes, rivers, forests, and caves. Along the way they'll teach natural and cultural history, share flora and fauna identification and illuminate the story of Central Oregon's geological past.

Popular tour options include Dinner Canoe, custom Hikes or Walking Tours, Local Libations Tours, Moonlight or Under the Stars Canoe and Kayak Trips; Bonfire on the Snow Tours; GPS Eco-Challenge and other team-building exercises and Art in Nature events. The professional event planner at Wanderlust Tours can help you plan the perfect custom group tour, wedding activity, or corporate event.

#### **FLY FISHING**

##### **FLY FISHERS PLACE**

**541-549-FISH | [FlyFishersPlace.com](http://FlyFishersPlace.com)**

The Fly Fisher's Place in Sisters offers over 40 guided fly fishing trips in the area. They also offer casting lessons, and 101, 201 and 301 Fly Fishing Schools. Private lessons and group classes are available, with all equipment included.





# On the Ranch

## TOP 10 PLACES OFF THE BEATEN PATH AT BLACK BUTTE RANCH

Throughout our 1,800 acres are a wealth of activities to enjoy, but add some of these “off the beaten path” places to your adventure list to enhance your Black Butte Ranch experience.

### ASPEN LAKE:

A quiet lake accessible by the bike path that winds through the Ridge Cabin, Aspen Home and Black Butte sections.

### PAULINA SPRINGS:

Paulina Springs bubbles out of the ground in a tranquil, wooded area. Accessing it from the boardwalk is a treat.

### NATURE TRAIL:

Walk along Phalarope Lake from the Lodge to Big Meadow. You may catch a glimpse of a Rainbow trout, an osprey or bald eagle flying overhead, or even an otter playing in the quiet waters.

### HOMESTEAD LAKE:

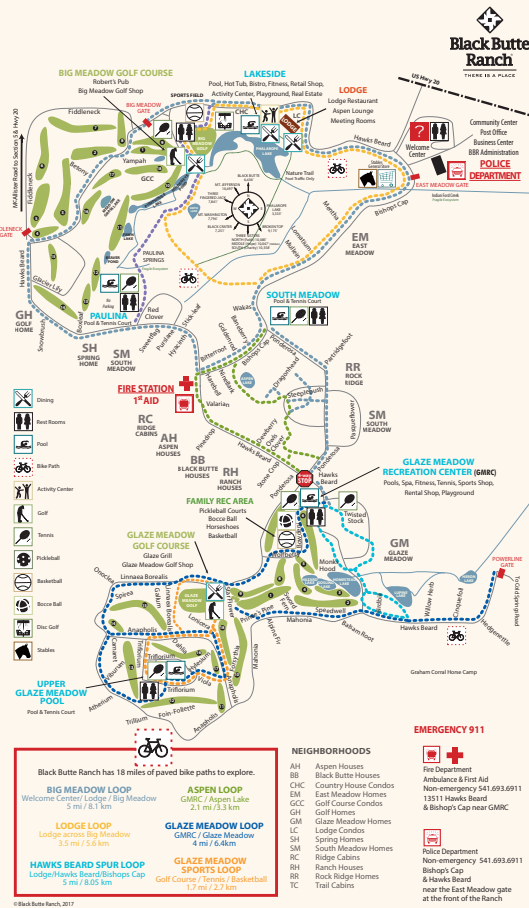
The Homestead Lake wildflower and lupine bloom is a spectacular sight to see.

### BIG MEADOW BENCH:

Off the nature trail, there’s a plank bench that is a great place to sit and soak in the views, day or night.

### SECRET WATER TRAIL:

Paddle across the east side of Phalarope Lake and you’ll hit a narrow channel. Here, you’re likely to see baby goslings, ducks and red-winged blackbirds.



## STROLL THROUGH THE ASPEN GROVE:

The Aspen grove near the entrance to the Ranch provides a gentle sound of the leaves rustling that is instantly calming. You may even catch a view of the horses galloping in the meadow.

## WALK OR RIDE THROUGH THE MEADOW:

Access the bike path from Bishops Cap and make your way across the Meadow. Horses are grazing, ducks are fluttering, and the mountain views are spectacular.

## MOUNTAIN COMPASS:

The mountain locator by the Lodge firepit is a compass style monument that provides you with a visual navigation of each mountain peak’s names and elevation.

## ASPEN LOUNGE DECK:

Perched atop the 3rd floor of the Lodge is the Aspen Lounge- a great place to capture the sun setting over the Cascade mountains.

# Explore the Backyard

## BLACK BUTTE LOOKOUT:

Hike BBR’s namesake in this 3.6 mile, 1,556 foot climb. Views of Cascade peaks and BBR await at the summit.

## METOLIUS RIVER:

The Metolius River boasts blue waters and lush forests. From the Headwaters of the Metolius to the Wizard Falls Fish Hatchery, the trails are mostly flat.

## SISTERS TIE TRAIL:

This trail is a mix of old roads and single track, it runs 6.6 miles one-way with access points along its length.



## SUTTLE LAKE TRAIL:

This flat 3.6 mile trail winds along the forested shore, 5 miles west of the Ranch.

## JACK CREEK TRAIL:

Jack Creek’s headwaters are fed by underground springs, and offers wildflowers and easy, flat terrain.



---

## Annual Events

Events and details at [BlackButteRanch.com](http://BlackButteRanch.com)  
and [SistersCountry.com](http://SistersCountry.com)

### EASTER BRUNCH:

Brunch at the Lodge | Easter Egg Hunt on the lawn

### MOTHER'S DAY BRUNCH:

Brunch at the Lodge | Moms golf free

### MEMORIAL DAY:

Demo Days and Tent Sale | Activities

### SISTERS RODEO:

Buckin' broncs and barrel racers! Every year, the best cowboys and cowgirls in rodeo come to Sisters for the fat purses of "The Biggest Little Show in the World!"

### MUSIC & CLIMBING WALL:

Summer Wednesday evenings | Free live music by local musicians, a kids' climbing wall and a good time for all.

### BBR FIREHOUSE TOURS:

Summer Wednesday mornings

### BBRPD SAFE KIDS—BIKE SAFETY:

Summer Tuesday mornings

### 4TH OF JULY CELEBRATION:

A traditional-style Independence Day celebration with Bike Parade, picnic on the Lodge lawn, old-fashioned games, climbing wall, live music, movie night and family fun.



### MCKENZIE RIVER WATERFALLS:

The McKenzie River Trail offers a 3 mile loop with beautiful forests and views of Sahalie and Koosah Falls.

### PROXY FALLS:

This easy loop trail of 1.25 miles is one of the most photographed spots in Oregon.

### WHYCHUS CREEK LOOKOUT:

A 1 mile accessible trail that offers views of the Whychus Creek Wild and Scenic River area, and the Three Sisters' peaks.

### THREE CREEKS AREA:

Three Creeks Lake has many options for hiking, from the steep, 4.5 mile Tam McArthur Rim, to the 3 mile mountain meadow retreat of Little Three Creeks Lake.

### DEE WRIGHT OBSERVATORY:

This mountain observatory is located at the summit of McKenzie Pass on Hwy 242. At 5,187', it offers panoramic views of the Mt. Washington and Three Sisters Wilderness areas.



### THE QUILT SHOW AT BLACK BUTTE RANCH:

Friday before the Sisters Quilt Show | Local artists' works of art and deli lunch benefit local schools.

### SISTERS OUTDOOR QUILT SHOW:

Second Saturday in July | The world's largest outdoor quilt show and sale, drawing thousands of visitors.

### PEBBLE BEACH MOTORING CLASSIC:

Elegant automobiles participate in the Pebble Beach Motoring Classic during their annual lunch stop here.

### SISTERS FOLK FESTIVAL:

Music lovers from around the world come to town for the nationally renowned Sisters Folk Festival.

### SISTERS HARVEST FAIR:

This juried arts and crafts fair is held in October in Sisters and features some of the best vendors.

### PHOTOGRAPHY IN THE ASPENS:

A photography workshop with Rick Schafer that was created and inspired by the natural beauty of the Ranch.

### THANKSGIVING:

Dinner at the Lodge | Turkey Trot

### HOLIDAY SEASON:

Christmas Dinner | Carriage Rides | Special Activities





# Black Butte Ranch®

THERE IS A PLACE

7 MILES WEST OF SISTERS OREGON ON HWY 20  
[BlackButteRanch.com](http://BlackButteRanch.com)

For more information on planning your destination  
wedding or catered function at Black Butte Ranch,  
please contact the Catering Sales Manager.

**[Catering@BlackButteRanch.com](mailto:Catering@BlackButteRanch.com)**  
**866.976.7537**